

Expanding the role of social determinants in a state-level scorecard

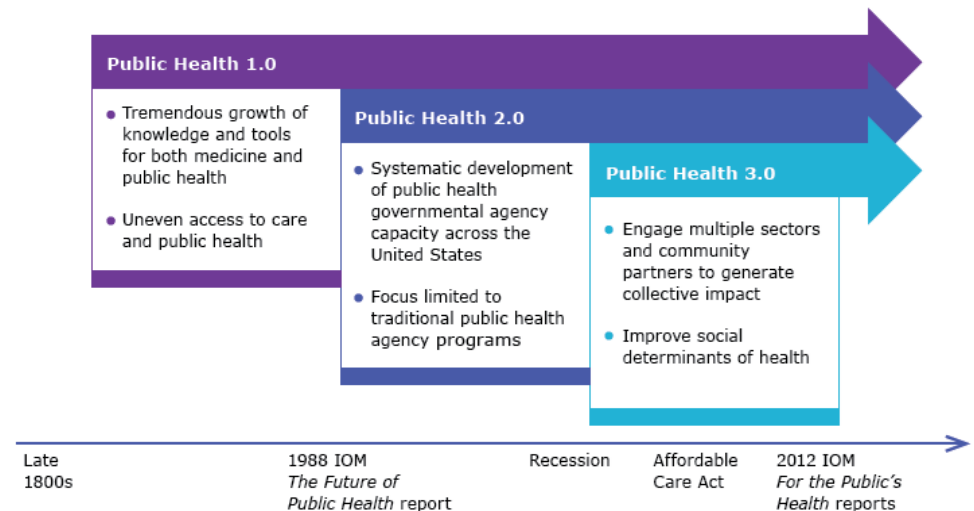
Tom Eckstein, Arundel Metrics, Inc.

Disclosures

Arundel Metrics, Inc receives funding from the United Health Foundation to produce America's Health Rankings.

Drivers of change

1. Continued expansion of understanding of health
 - a. Role of the physical environment
 - b. Role of economic and social environment
2. Remain relevant to current interventions
3. Engage multi-sector stakeholders
4. Take advantage of new and improved data sources
5. Incorporate more 'plain language' terminology

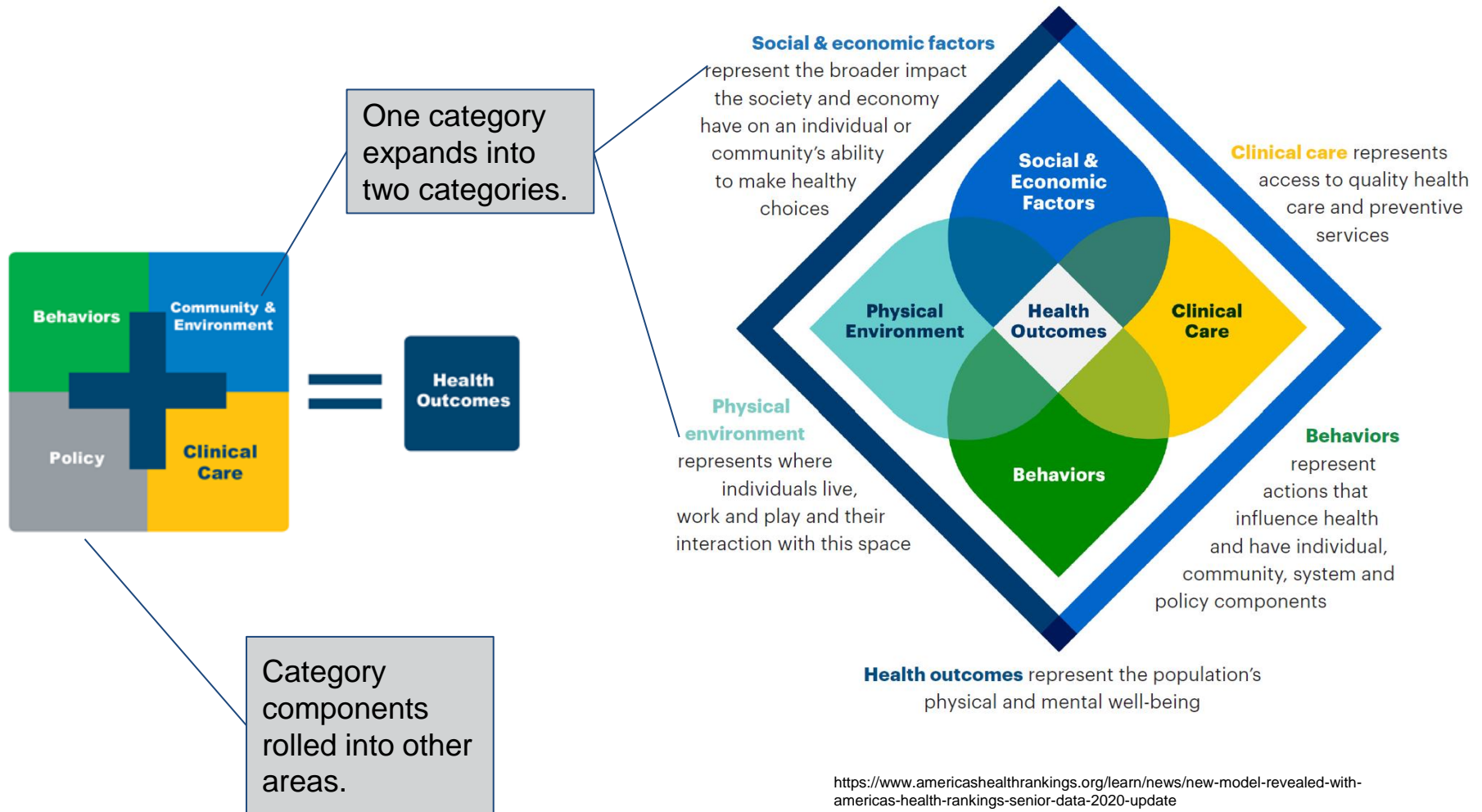


DeSalve, K et al, Public Health 3.0: A Call to Action for Public Health to Meet the Challenges of the 21st Century <http://dx.doi.org/10.5888/pcd14.170017> accessed Oct 22, 2019.

Process

1. Reviewed literature
2. Gathered guidance from AHR Advisory Council and Committees
 - a. Council for overall direction
 - b. Committees for each major report
 - i. Annual (general population)
 - ii. Senior
 - iii. Health of Women and Children
3. Created model alternatives and visualizations
4. Created laundry lists of metrics for each segment of the model. Metric criteria:
 - a. State-level
 - b. Reliable and credible
 - c. Updated periodically
 - d. Amenable to change
5. Modeled scorecards
 - a. Introduction of topics within major model categories

Revised Model



2020 Senior Model & Measures

Definitions of all metrics: see <https://www.americashealthrankings.org/learn/reports/2020-senior-health/appendix-measures-table>

Health Behaviors

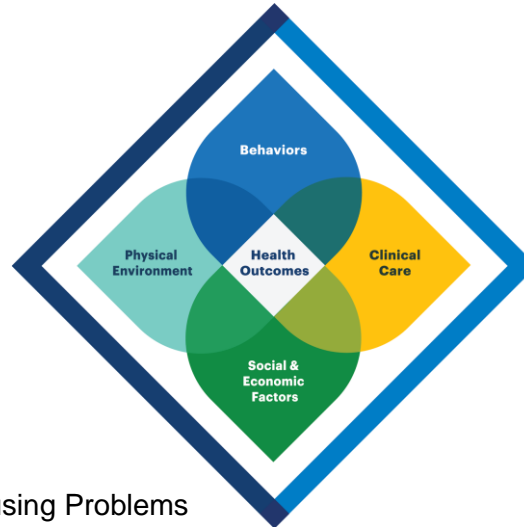
- ▶ Insufficient Sleep
- ▶ Physical Activity and Nutrition
 - ▶ Exercise
 - Physical Inactivity
 - ▶ Fruit Consumption
 - ▶ Vegetable Consumption
- ▶ Substance Use
 - Excessive Drinking
 - Smoking

Physical Environment (new)

- ▶ Air and Water Quality
 - ▶ Air Pollution
 - ▶ Non-Smoking Regulation
 - ▶ Drinking Water Violation
- ▶ Housing and Transit: Severe Housing Problems

Social & Economic Factors (new)

- ▶ Household Economics
 - Food Insecurity
 - Poverty
 - SNAP Reach
- ▶ Social Support & Engagement
 - Community Support Expenditure ^{N, D}
 - Low-care Nursing Home Residents
 - ▶ Risk of Social Isolation
 - Volunteerism
 - ▶ Voter Turnout
- ▶ Community Safety: Violent Crime



Clinical Care

- ▶ Access to Health Services
 - ▶ Avoided Care Due to Cost
 - Dedicated Health Care Provider
 - ▶ Geriatricians
 - Home Health Care Workers ^D
- ▶ Preventive Clinical Services
 - Cancer Screenings ^N
 - ▶ Immunizations
 - Flu Vaccination
 - ▶ Pneumonia Vaccination
 - ▶ Shingles Vaccination
- ▶ Quality of Care
 - Hospice Care ^{S, D}
 - Hospital Readmissions ^{S, D}
 - Nursing Home Quality
 - Preventable Hospitalizations ^{S, D}

Health Outcomes

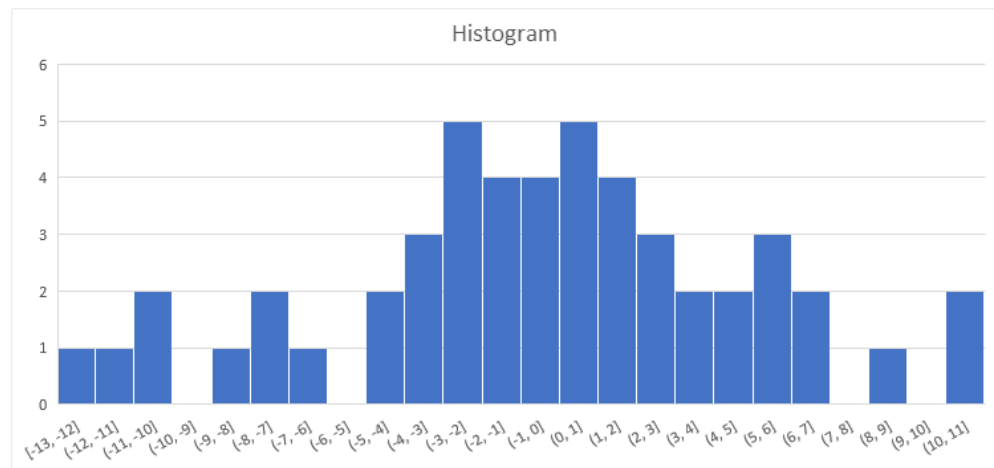
- ▶ Health Status
 - Able-bodied
 - Frequent Mental Distress
 - ▶ Frequent Physical Distress
 - High Health Status
- ▶ Illness and Injury
 - Falls
 - ▶ Multiple Chronic Conditions (4+)
 - Obesity
 - Teeth Extractions
- ▶ Mortality
 - Early Death
 - ▶ Suicide ^D

- ▶ New measure
- ^N New name
- ^S New source
- ^D Revised definition

Impact on Rank

1. 22 of 50 states changes 2 or less ranks
2. 10 of 50 changed 3 or 4 places
3. 18 changes 5 or more
4. Large changes caused by
 - a. Expanded breadth of model, in particular the social/economic determinants

Result: Reset of baseline



Contact: Tom Eckstein, Arundel Metrics, Inc.

tom@arundelmetrics.com

Co-authors: Sarah Milder (sarah@arundelmetrics.com)

Kristin Shaw (kristin@arundelmetrics.com)

Website: AmericasHealthRankings.org

Funding:

UNITED HEALTH FOUNDATION®

Explore data.

Gain insights.

Learn more about your state.

VISIT: www.AmericasHealthRankings.org